

INTERNATIONAL

SEPTEMBER 2013  
www.craneworld.com  
A KHL Group publication

# cranes

AND SPECIALIZED TRANSPORT

Wire rope

Top Lift preview

TOWER CRANES:  
*IC Tower Index*

IHI towers

On site with  
Comansa

ITC preview

THE KNOWLEDGE:  
Marco van Daal

# Super heavy



THE MAGAZINE FOR EQUIPMENT USERS AND BUYERS

# CONTENTS

## ON THE COVER



Huisman from the Netherlands is developing a range of super heavy lift cranes for onshore application. See the full story starting on page 11.

## SUBSCRIPTIONS

International Cranes and Specialized Transport is a monthly publication with a worldwide circulation. The annual airmail subscription rate is £195, US\$310, €235. International Cranes and Specialized Transport is published on the 15th of each month.

Material published in International Cranes and Specialized Transport is protected under international copyright law and may not be reproduced without prior permission from the publisher.

KHL also publishes International Construction, Demolition & Recycling International, Construction Europe, International Rental News, Access International, American Cranes & Transport, Access, Lift & Handlers and International Construction Turkey. Call +44 1892 784088 for details.

International Cranes and Specialized Transport (USPS 017 158) is published monthly by KHL Group and distributed in the US by DSW, 75 Aberdeen Road, Emigsville, PA 17318-0437. Periodicals postage paid at Emigsville, PA. Postmaster: Send address changes to International Cranes and Specialized Transport, c/o PO Box 437, Emigsville, PA 17318-0437.



BPA Worldwide is the global industry resource for verified audience data and media knowledge. BPA Worldwide business media audits provide assurance, insight and advantage to business-to-business media owners and media buyers.

Published by



© Copyright KHL Group 2013  
ISSN: 1747-700X

Printed by: Garnett Dickinson Print, UK



The paper in this magazine originates from timber that is sourced from sustainable forests, managed to strict environmental, social, and economic standards. The manufacturing mill has both FSC & PEFC certification, and also ISO9001 and ISO14001 accreditation.

## MEMBER OF



## NEWS

6

HTC buys Kier cranes, CAA's crane guidance, Allstone's mega move, First Palfinger Sany Cranes to Russia, Albert Marine on Hurricane Sandy rebuild, Manitex record revenue

## PRODUCT NEWS SPECIAL

11

Entering the super heavy lift crane arena is a new range from Huisman – the Compact Ringer Crane. Alex Dahm reports

## BUSINESS

15

Crane manufacturers' shares enjoyed modest growth in August, despite a decline on the wider markets. Chris Sleight reports

## TOP LIFT PREVIEW

16

Readers are asked to pick their favourite from our selection of 10 outstanding lifting projects carried out over the last 12 months

## TOWER CRANES

21

Japan's IHI uses experience gained from a long history to offer customised jib cranes that are individually designed and manufactured. Heinz-Gert Kessel reports



## SITE REPORT

26

A total of 15 Linden Comansa tower cranes have been working at a hydroelectric plant in Portugal. IC reports

## ITC PREVIEW

29

Preparations are well under way for the third ITC conference. An impressive speaker programme includes leading industry figures from around the world. IC previews the 2013 event



## SPECIALIZED TRANSPORT REPORT

31

CPL transported 10 large brewery vessels in the UK. David Weston was there

## THE KNOWLEDGE

35

Marco van Daal turns his attention from transport to cranes with an historical perspective on developments in the lifting industry

## TOWER CRANE INDEX

43

This year's IC Tower Crane Index indicates a stable and gradually expanding global tower crane market. IC reports

## ROPES IN THE INDUSTRY

45

Requirements for ropes are changing. Laura Hatton spoke to manufacturers about new products to meet customer demand



## SITE REPORT

51

A Terex CC 8800-1 lattice boom crawler crane on a 1,147 tonne lift in Singapore. IC reports

## BICES PREVIEW

53

A record 1,500 exhibitors will be at the BICES exhibition in China. Helen Wright reports



## EQUIPMENT & ACCESSORIES

61

A selection of equipment and accessories for all sectors of the lifting industry

## BACK PAGE

63

People news, events diary, picture of the month

## SUBSCRIPTIONS

65

How to subscribe to IC

## CLASSIFIED

65



SC&RA

## SC&RA COMMENT

55

Comment from Joel Dandrea, SC&RA executive vice president

## SC&RA NEWS

56

The challenges change but the industry holds steady is a theme in this look at two transport companies. Mike Chalmers reports

The secondary hydroelectric plant is downstream closer to the river's mouth



# Forest of flat tops

**A total of 15 Linden Comansa tower cranes have been working at a hydroelectric plant in Portugal. IC reports**

**T**ower crane manufacturer Linden Comansa distributor in Portugal, Ibergru, has supplied 15 flat top tower cranes for the Baixo Sabor hydroelectric plant project in Torre de Moncorvo.

The main contractor on the project is Energias de Portugal (EDP), the largest electricity utility company in the country. Planning and logistics of the project have been undertaken by Ibergru.

Two dams are being built at the site. The main dam is upstream of the Sabor River, while the second dam is 9.5 kilometres

downstream. The first hydroelectric plant has a double-curvature dam with a height of 123 metres and a width of 505 m. The second plant, which is close to the river's mouth, will have a dam 45 m high and 315 m wide.

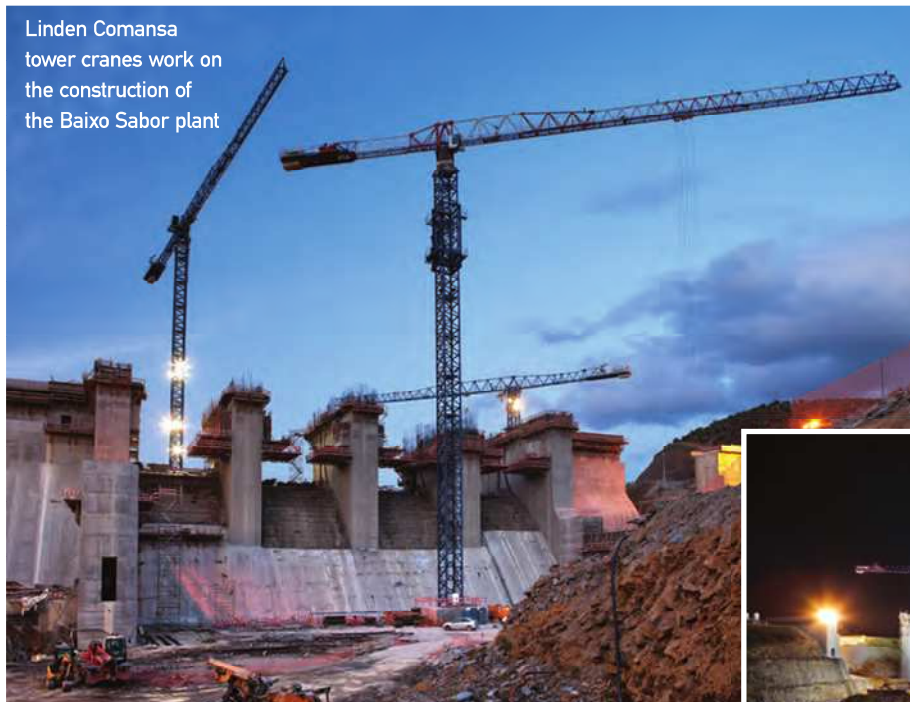
## Around the site

To help with the large scale project, the 15 tower cranes have been located at different sites. At the main plant, four model 10LC140 tower cranes with a load capacity of 8 tonnes are being used.

Two of the 10LC140s have been used to assist with the assembly of an air transport system with cables to pour large amounts of concrete during the construction of the dams. The unusual cable crane system is known as a blondin in honour of Charles Blondin, a famous French tightrope walker of the 19th Century.

Next to the upstream station, an LC5211 5 tonne tower crane is helping construct an administration building, while two 5 tonne capacity 5LC5010s are working as service

Working at night in Torre de Moncorvo



Linden Comansa tower cranes work on the construction of the Baixo Sabor plant



cranes in the yards that serve as warehouses and workshops at the jobsite.

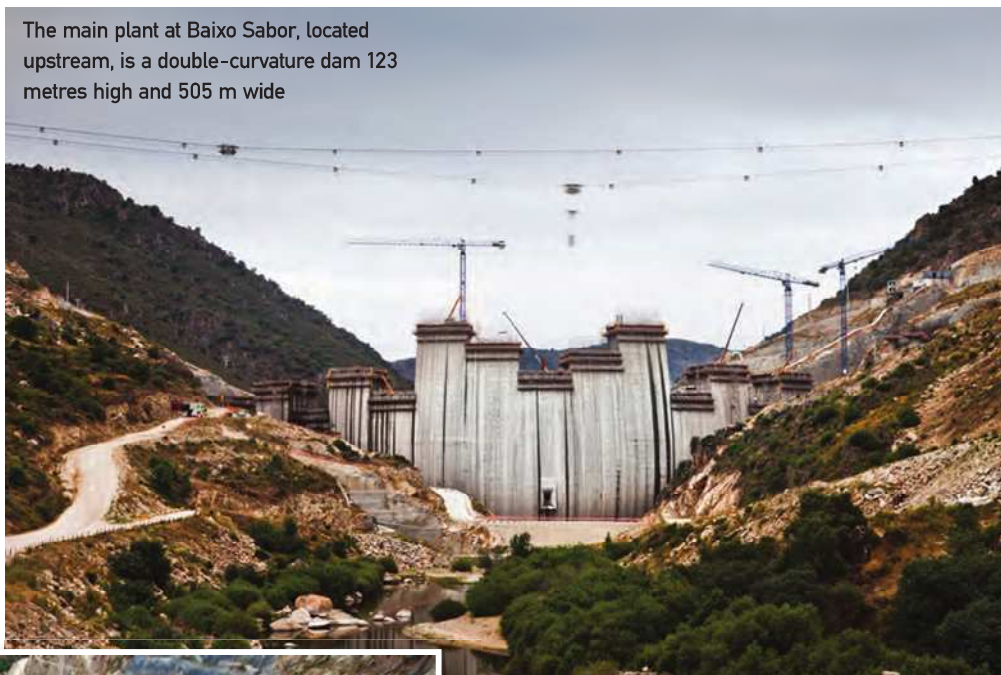
The five largest tower cranes, including two 21LC750 with up to 48 tonnes capacity, and three 21LC550s with a load capacity of 18 tonnes each, are working on the second dam.

Another 5 tonne capacity 5LC5010 is working as a service crane, helping to manage the machinery and materials required on site, the company said.

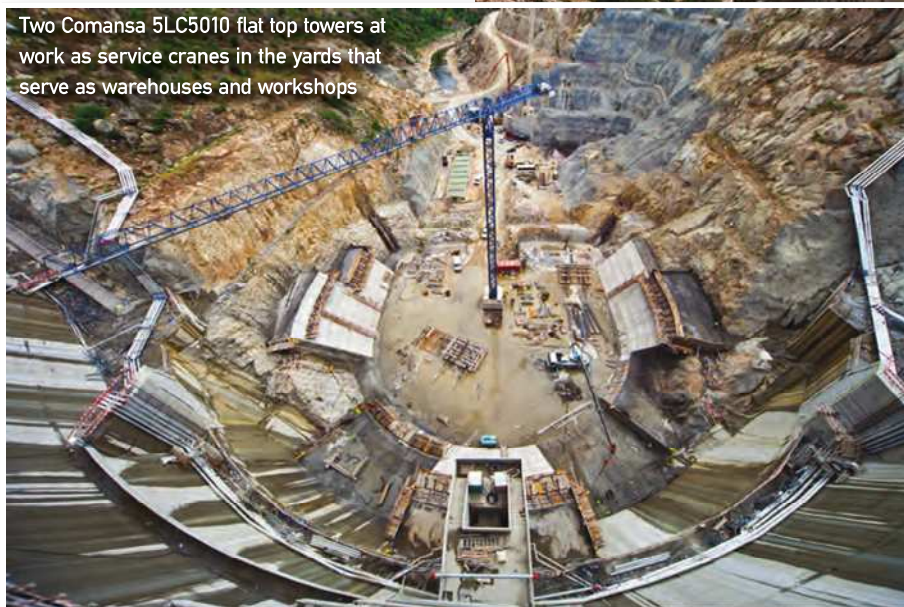
### Bridge towers

In addition to these tower cranes, two Linden Comansa 21LC290s, with capacities of up to 18 tonnes, are working on the construction of a new bridge. The bridge is 268 m long and 40 m high and once completed will allow the EN102 road to cross the river.

The main plant at Baixo Sabor, located upstream, is a double-curvature dam 123 metres high and 505 m wide



Two Comansa 5LC5010 flat top towers work as service cranes in the yards that serve as warehouses and workshops



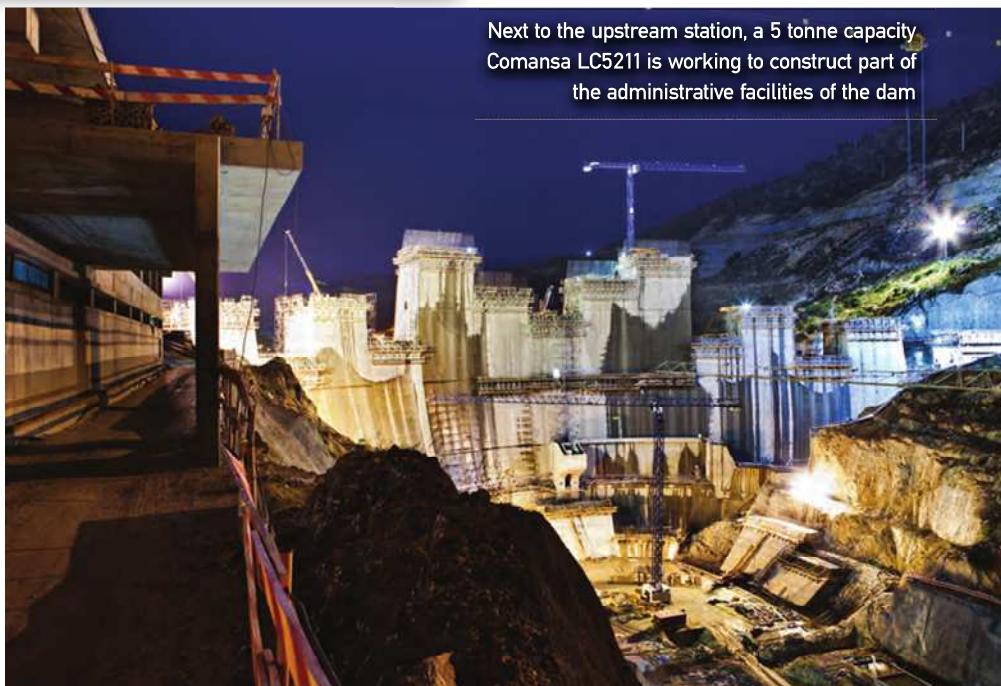
Around 1.1 million cubic metres of concrete will be used and around 3 million cubic metres of the site will be excavated. The dams are being constructed by Baixo Sabor ACE, a joint-venture company formed by Odebrecht and Bento Pedroso Construções, and Lena Construções.

The budget for the project is estimated at more than € 480 million (US\$ 643 million). Together the two dams will flood an area of more than 50 km.

On completion the hydroelectric power plant, which has been under construction since 2008, will have an installed capacity of 170 MW and will be capable of generating up to 444 GWh per year. The power project is due for completion in August 2014.



The assembly of two of the 10LC140 cranes was a challenge due to difficult accessibility



Next to the upstream station, a 5 tonne capacity Comansa LC5211 is working to construct part of the administrative facilities of the dam