

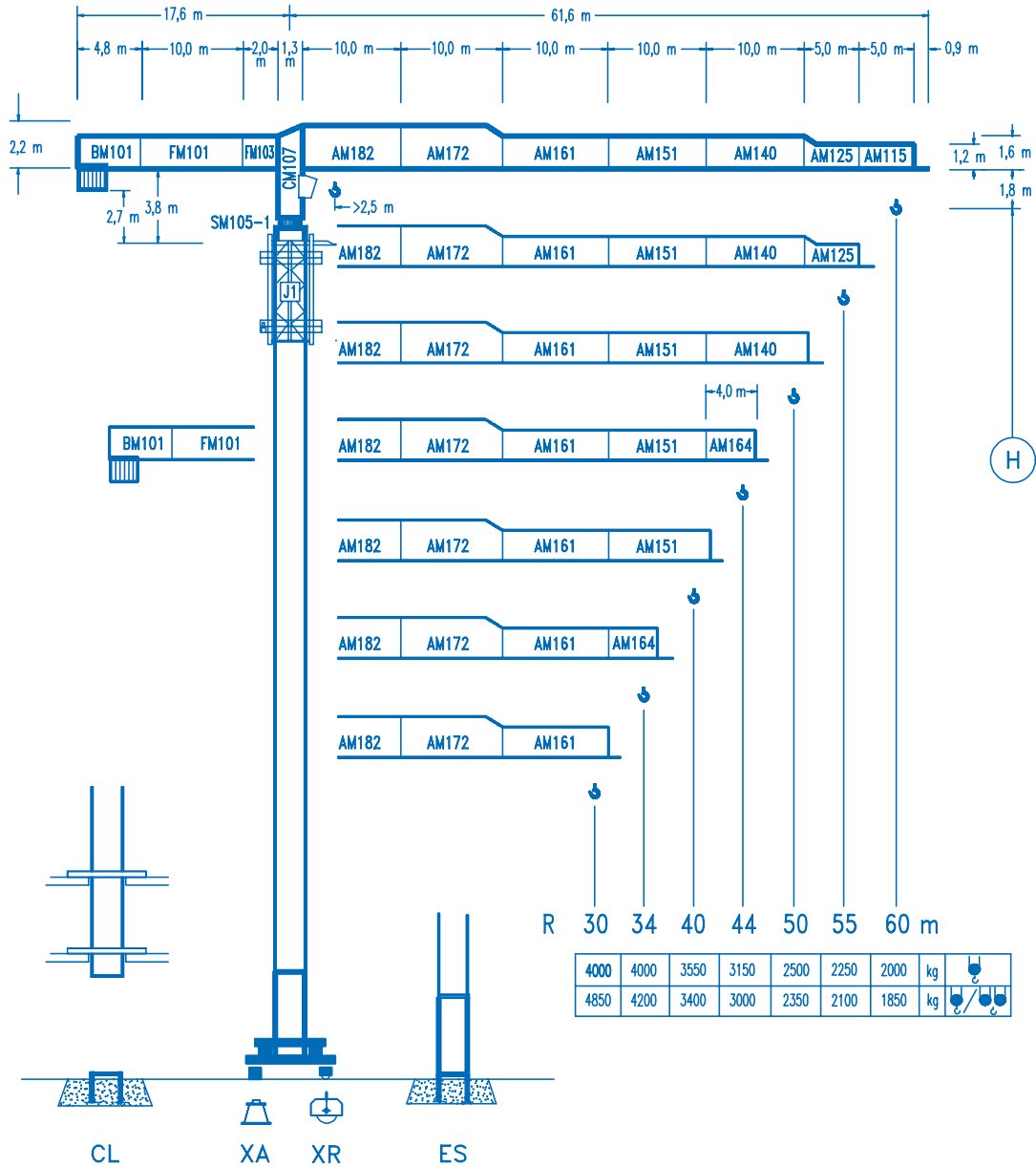


# COMANSA

## LINDEN 1000

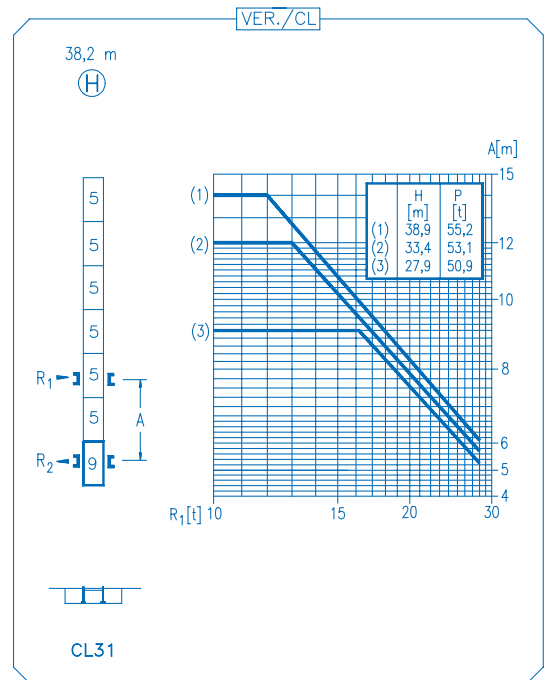
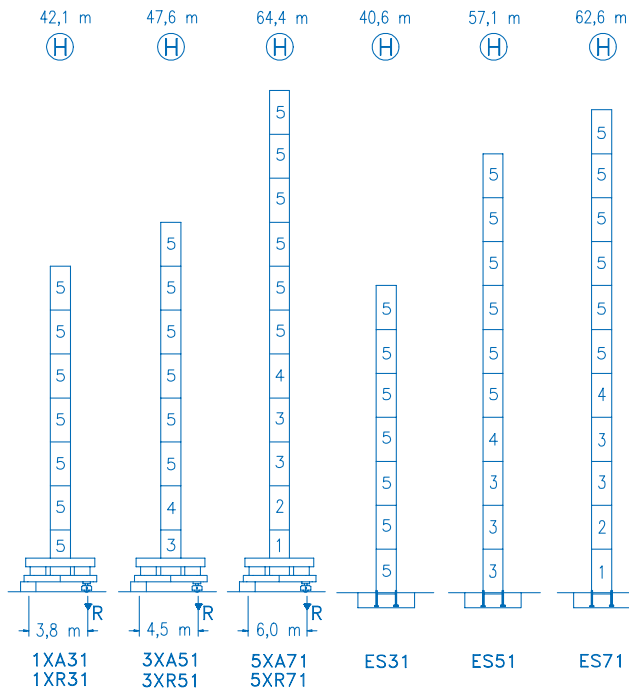
## 10 LC 140

## 8 t



CE  
DIN 15018 H1 B3

R	R <sub>(C<sub>max</sub>)</sub>	C <sub>max</sub>	25	30	34	40	44	50	55	60	m
60	33,1 m 17,5 m	4000 8000	4000 5365	4000 4350	3885 3775	3230 3095	2895 2750	2490 2345	2225 2075	2000 1850	
55	33,5 m 17,7 m	4000 8000	4000 5420	4000 4395	3930 3795	3270 3125	2930 2785	2520 2375	2250 2100		
50	33,2 m 17,5 m	4000 8000	4000 5375	4000 4355	3900 3765	3240 3100	2905 2760	2500 2350			
44	35,6 m 18,8 m	4000 8000	4000 5805	4000 4715	4000 4080	3515 3365	3150 3000				
40	36,0 m 18,9 m	4000 8000	4000 5860	4000 4760	4000 4120	3550 3400					
34	34,0 m 19,2 m	4000 8000	4000 5970	4000 4850	4000 4200						
30	30,0 m 19,2 m	4000 8000	4000 5970	4000 4850							



<b>R. máx.</b>	En servicio	<b>1XR31 ..... 74,0 t</b>
	In operation	<b>3XR51 ..... 71,9 t</b>
	En service	<b>5XR71 ..... 82,4 t</b>
	In Betrieb	

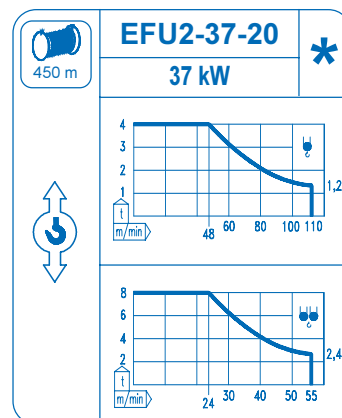
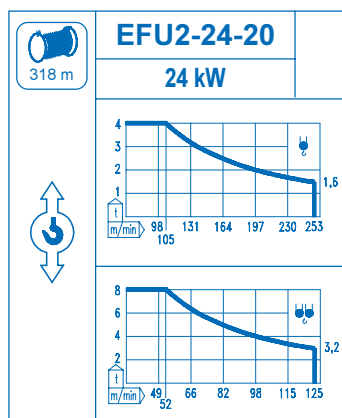
<b>R. máx.</b>	Fuera de servicio	<b>1XR31 ..... 81,7 t</b>
	Out of service	<b>3XR51 ..... 89,4 t</b>
	Hors service	<b>5XR71 ..... 125,4 t</b>
	Ausser Betrieb	

**CFU-4.0**  
4 kW  
0 ⇄ 66 m/min

**GR-7.5**  
2 x 75 Nm  
0 ⇄ 0,7 rpm

**TS2-5.5** | **TRA-7.5**  
2 x 55 Nm | 2 x 75 Nm  
0 ⇄ 20 m/min  
1XR31 | 3XR51 | 5XR71

**TRA-7.5VC**  
2 x 75 Nm  
0 ⇄ 20 m/min  
5XR71



Tensión de alimentación	<b>400 V</b>
Operating voltage	<b>3 ph</b>
Tension de service	<b>50 Hz</b>
Betriebsspannung	

Opcional	<b>*</b>
Optional	
En option	
Kaufoption	

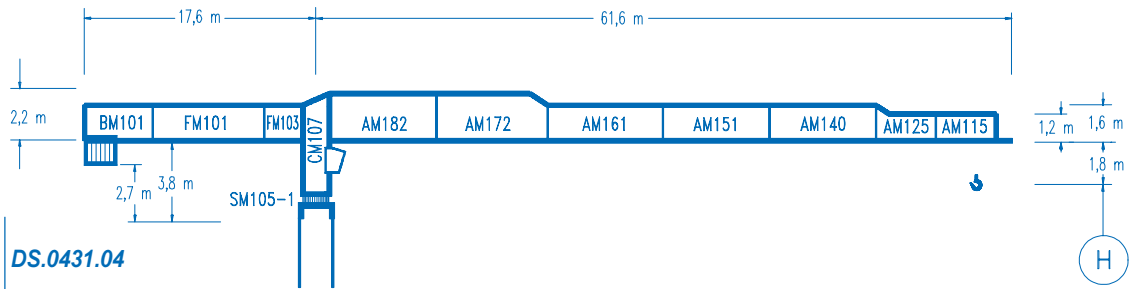


**COMANSA**

**LINDEN 1000**

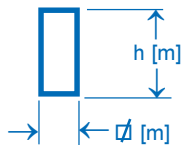
**10 LC 140**

**2,0 m**

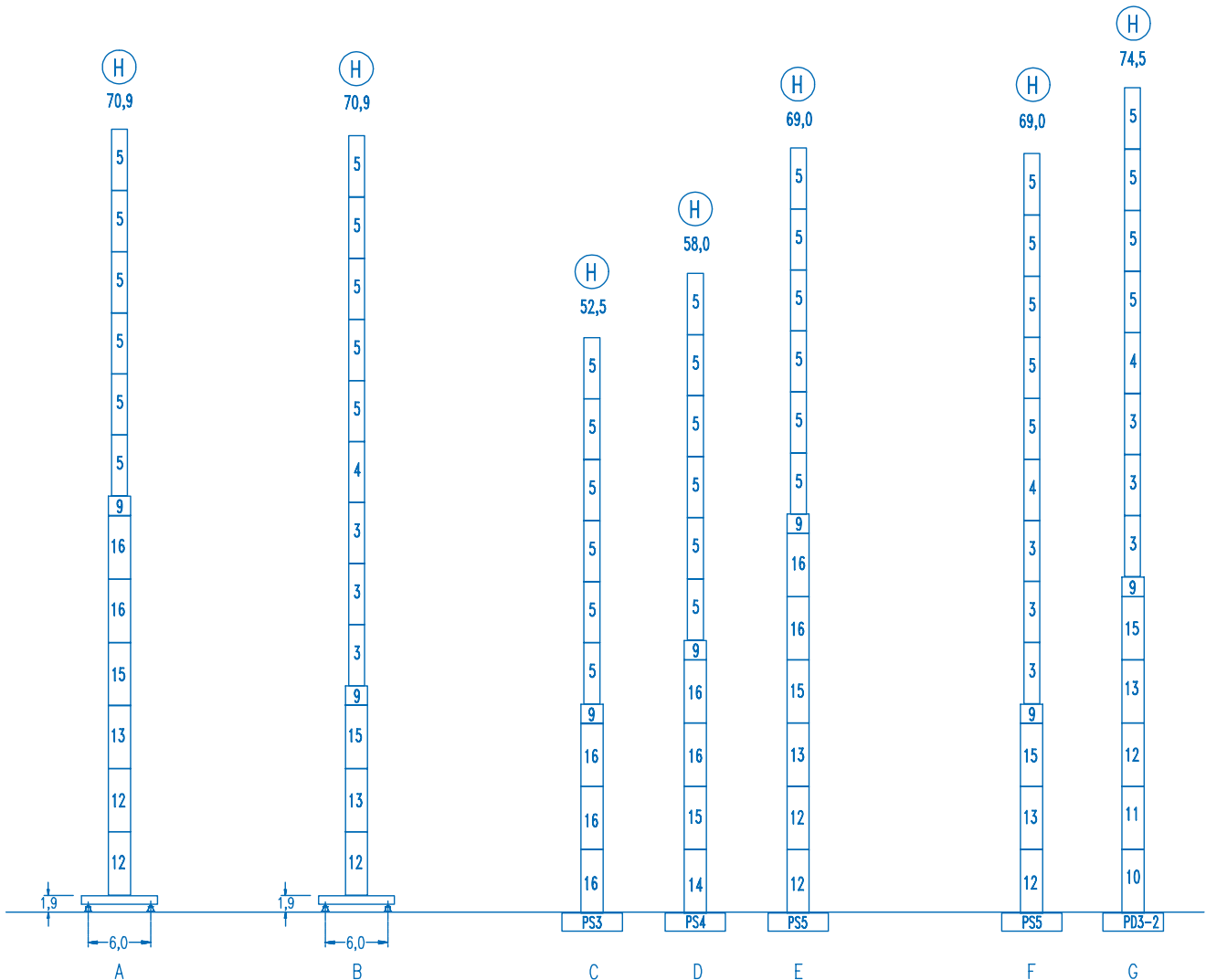


Configuraciones ver  
Configuration see  
Configurations voyez  
Komponenten siehe

DS.0431.04



n°	Ref.	∅	h	n°	Ref.	∅	h	n°	Ref.	∅	h	n°	Ref.	∅	h
3	S14	1,6	5,5	9	TMS23	2,0	1,0	12	S25	2,0	5,5	15	TS24	2,0	5,5
4	TS14	1,6	5,5	10	D23	2,0	5,5	13	TS25	2,0	5,5	16	S23	2,0	5,5
5	S13	1,6	5,5	11	TD23A	2,0	5,5	14	S24	2,0	5,5				



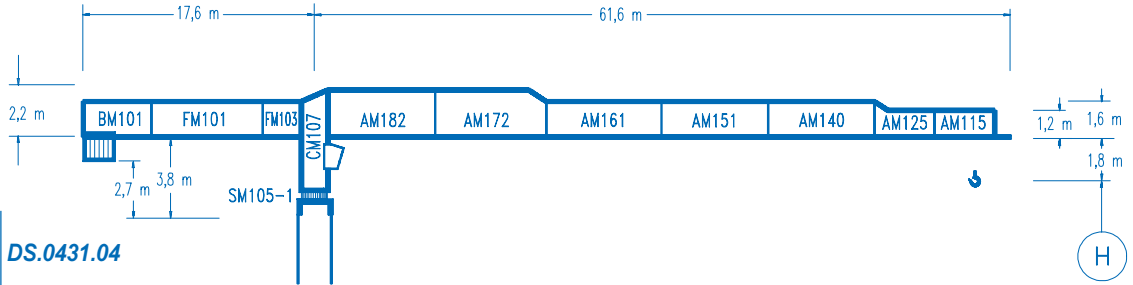


# COMANSA

## LINDEN 1000

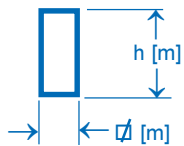
## 10 LC 140

## 2,5 m

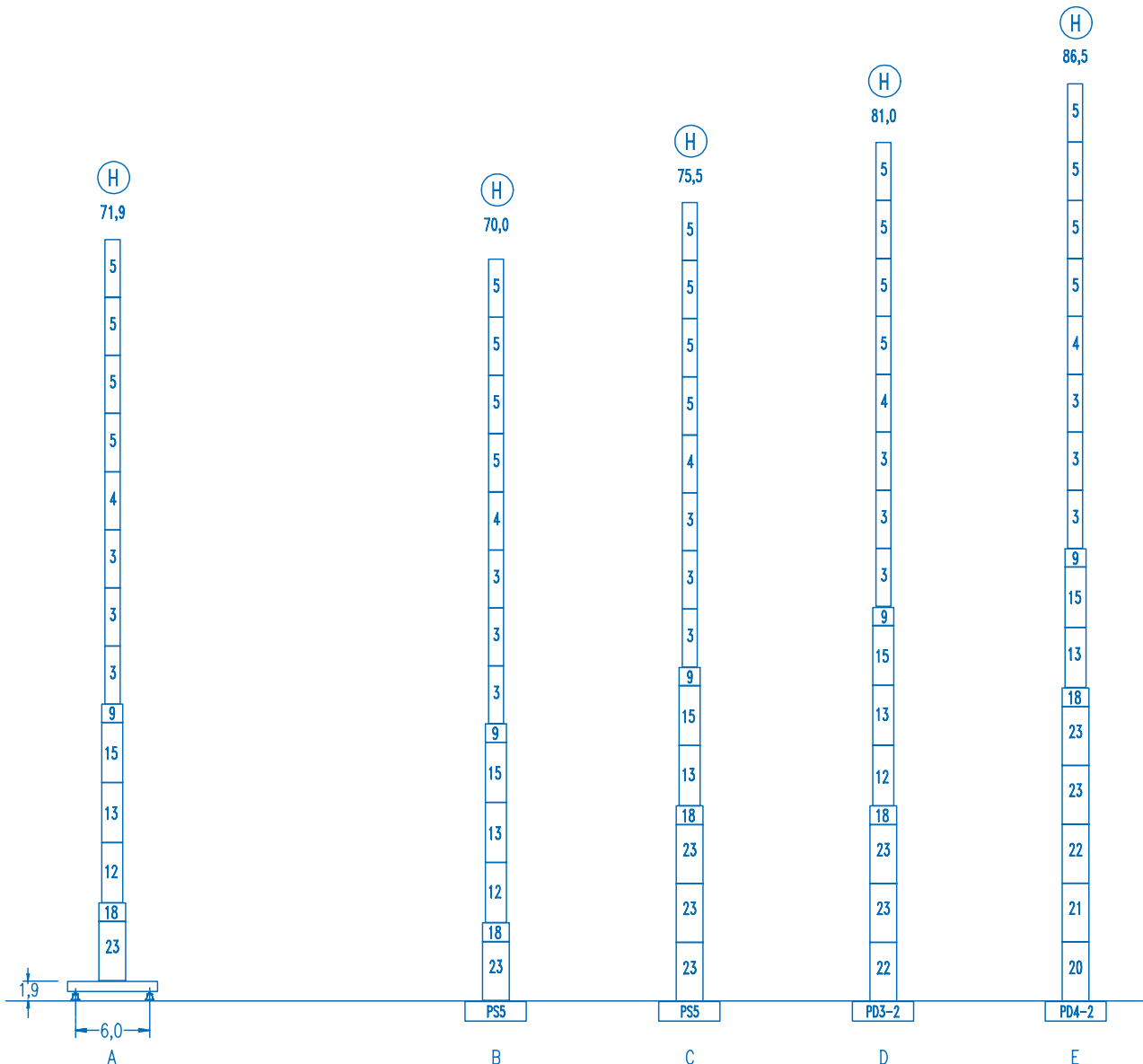


Configuraciones ver  
Configuration see  
Configurations voyez  
Komponenten siehe

DS.0431.04



n°	Ref.	∅	h	n°	Ref.	∅	h	n°	Ref.	∅	h	n°	Ref.	∅	h
3	S14	1,6	5,5	9	TMS23	2,0	1,0	14	S24	2,0	5,5	20	TD34	2,5	5,5
4	TS14	1,6	5,5	12	S25	2,0	5,5	15	TS24	2,0	5,5	21	D33	2,5	5,5
5	S13	1,6	5,5	13	TS25	2,0	5,5	18	TMS35	2,5	1,0	22	TD33A	2,5	5,5
												23	S35	2,5	5,5



DS.0432.08

09/04

Reserva de modificaciones.- Subject to modifications.- Modifications réservées.- Konstruktionsänderungen vorbehalten.